

THE BALANCE BETWEEN PERFORMANCE, SUSTAINABILITY, AND COST

In today's rapidly urbanising world, meeting society's demands on the built environment poses a significant challenge. With population growth and shifting demographics, two-thirds of the global population is projected to be living in cities by 2050¹; and the subsequent need for efficient, high-performing, and safe housing and social infrastructure is becoming ever more pressing.

In the United Kingdom alone, at current rates, there will be an estimated shortfall of four million homes by 2040². The construction industry therefore faces the challenge of bridging this gap, whilst ensuring the long-term performance and maintenance of buildings and infrastructure in sustainable ways.

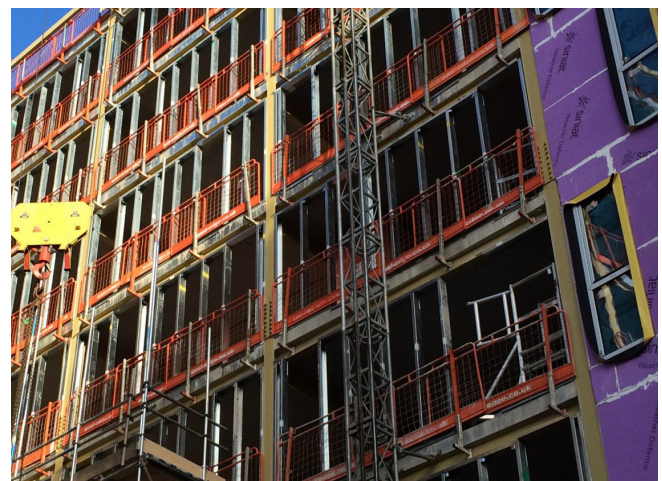


Unfortunately, in recent years the industry has witnessed numerous failures, exposing the limitations of both materials and construction practices. **To address these issues, and to secure the longevity and resilience of structures, embracing innovative materials and construction techniques is essential.** And, as disastrously exemplified by the Grenfell Tower tragedy, the need for thorough testing of product components within complete solutions is absolutely vital.

In addition to its responsibility for safe development, in today's society the construction industry must also navigate the imperative for sustainable solutions. **The industry's environmental impact is significant, contributing up to 23% of air pollution, 40% of energy-related CO2 emissions, 50% of climate change, and 50% of landfill waste³.**



These alarming statistics highlight the urgent need for collective responsibility and a transformative shift in construction practices. Given competing demands, it does pose the question of whether performance, sustainability or cost takes precedence. Fortunately, it is possible to balance all three.



1 United Nations
 2 World Economic Forum
 3 Environmental and Energy Study Institute

Etex is a leading provider of high-performance, cost-effective, and sustainable solutions in the construction industry. Their newest brand, Remagin, offers comprehensive single-source, lightweight offsite construction solutions that cover all aspects from design to installation.

Remagin's offsite construction solutions deliver a range of benefits that surpass those of traditional construction methods, including shorter construction times, reduced waste, improved efficiency, enhanced sustainability, and more purposeful performance.



Remagin places a strong emphasis on performance throughout the entire value chain. It achieves this by developing factory-manufactured systems that effectively eliminate uncertainties associated with specification decisions. Through comprehensive and rigorous full-scale testing regimes, Remagin ensures that the performance of all products within its systems is studied collectively, assuring that they work together reliably and as expected in real-world environments and situations.



As part of the Etex group, Remagin is able to leverage ongoing access to five Innovation and Technology Centres, where over EUR 30 million is allocated annually to research and development. These centres focus on advancing lightweight materials and innovative construction methods. Equipped with state-of-the-art testing facilities and laboratories, including those for fire, acoustic, mechanical, structural, and thermal assessments, Remagin ensures that its products undergo rigorous evaluation to guarantee reliability and performance.

With the endorsement of Etex, **Remagin is able to stand by its claim to deliver purposeful performance consistently.** Being a part of the global conglomerate, Remagin has the necessary resources to meet market demands while providing high-performing, cost-effective, and sustainable solutions.